

Spitfire® LED

Signature Spitfire LED recessed non-maintained



Range

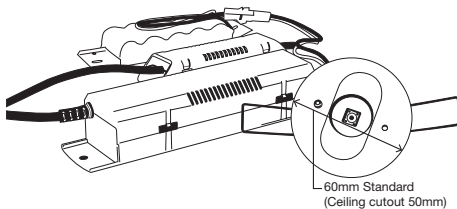
Signature range

Product group

Spitfire® LED

Features

- 3 year warranty
- Superior photometric classification
- LED technology 100,000 hours lamp life
- Single or dual LED option
- High temperature NiCad batteries
- Spring fixing design allows for different ceiling thickness (1mm-20mm)
- White adaptors included to convert standard 60mm lamp head to 85mm diameter and 141mm diameter size
- White square adaptor available for standard lamp head
- Metal trim covers available in black or natural stainless steel finish for standard round and square lamp heads
- Metal trim covers can also be painted to any colour



Standard products

Catalogue no.	Description
SF1LED	LED Spitfire single recessed
SF2LED	LED Spitfire dual recessed

Accessories

Catalogue no.	Description
02-SF1LSSTRIM	Single LED round trim stainless steel
02-SF1LBLTRIM	Single LED round trim black
02-SF2LSSTRIM	Dual LED round trim stainless steel
02-SF2LBLTRIM	Dual LED round trim black
02-SF1LSQSSTRIM	Single LED with square adaptor trim stainless steel
02-SF1LSQBLTRIM	Single LED with square adaptor trim black
02-SF2LSQSSTRIM	Dual LED with square adaptor trim stainless steel
02-SF2LSQBLTRIM	Dual LED with square adaptor trim black
02-SFLEDSQADAPT	White plastic square adaptor for LED Spitfire
02-SFLEDLGBLKIT	Black adaptor kit
SFLEDVRWR-KIT	Vandal resistant and weather resistant kit to suit 60mm recessed head

Spare parts

Catalogue no.	Description
03-01220	Battery 5 cell NiCad 6.0V 1.8Ah

Dimensions

Lamp head	Ceiling cutout
60mm standard	50mm
85mm adaptor	70mm
141mm adaptor	130mm

Weight

Model	Weight
Standard	1.0kg

Construction

Part	Construction
Lamp head	White polycarbonate

Light source

Model	Light source
Single LED	2W
Dual LED	3W

Power consumption

Model	Power consumption
Standard	5.5W

Photometrics

Model	Class	Classification
Single LED	C0	D40
	C90	D40
Dual LED	C0	D50
	C90	D50

Note: Designed to comply with AS2293 and meet relevant Australian EMC standards

Spitfire LED lamp head options

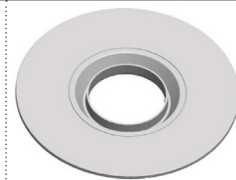
Supplied with product



60mm lamp head



85mm adaptor



141mm adaptor

Black adaptor



60mm lamp head



Round trim black
02-SF1LBLTRIM
02-SF2LBLTRIM



Black adaptor kit
02-SFLEDLGBLKIT



Round trims



60mm lamp head



Round trim black
02-SF1LBLTRIM
02-SF2LBLTRIM



Round trim stainless steel
02-SF1LSSTRIM
02-SF2LSSTRIM

Square trims



60mm lamp head



White square adaptor
02-SFLEDSQADAPT



Square trim black
02-SF1LSQBLTRIM
02-SF2LSQBLTRIM



Square trim s/steel
02-SF1LSQSSTRIM
02-SF2LSQSSTRIM

Note: All trims clip over the face of the 60mm lamp head and all adaptors fit behind the 60mm lamp head

For more information please contact:

ABB Australia Pty Limited

Phone: 1300 666 595

Fax: 1300 666 594

E-mail: AU-ABB-Stanilite@abb.com

www.stanilite.com.au

Note: We reserve the right to make technical changes or modify the contents of this document without prior notice. With regard to purchase orders, the agreed particulars shall prevail. ABB does not accept any responsibility whatsoever for potential errors or possible lack of information in this document.

We reserve all rights in this document and in the subject matter and illustrations contained therein. Any reproduction, disclosure to third parties or utilisation of its contents – in whole or in parts – is forbidden without prior written consent of ABB.

Copyright © 2016 ABB
All rights reserved